

# HARBWR PORTHMADOG HARBOUR

This chart is produced and intended as a guide only. All positions given are approximate. The Aids to Navigation may be moved without prior notice. Mariners are advised to consult regularly with the Harbour staff for updates. Tel 01766 512927 Mob 07879 433147 daveoneill@gwynedd.gov.uk

MORFA BYCHAN

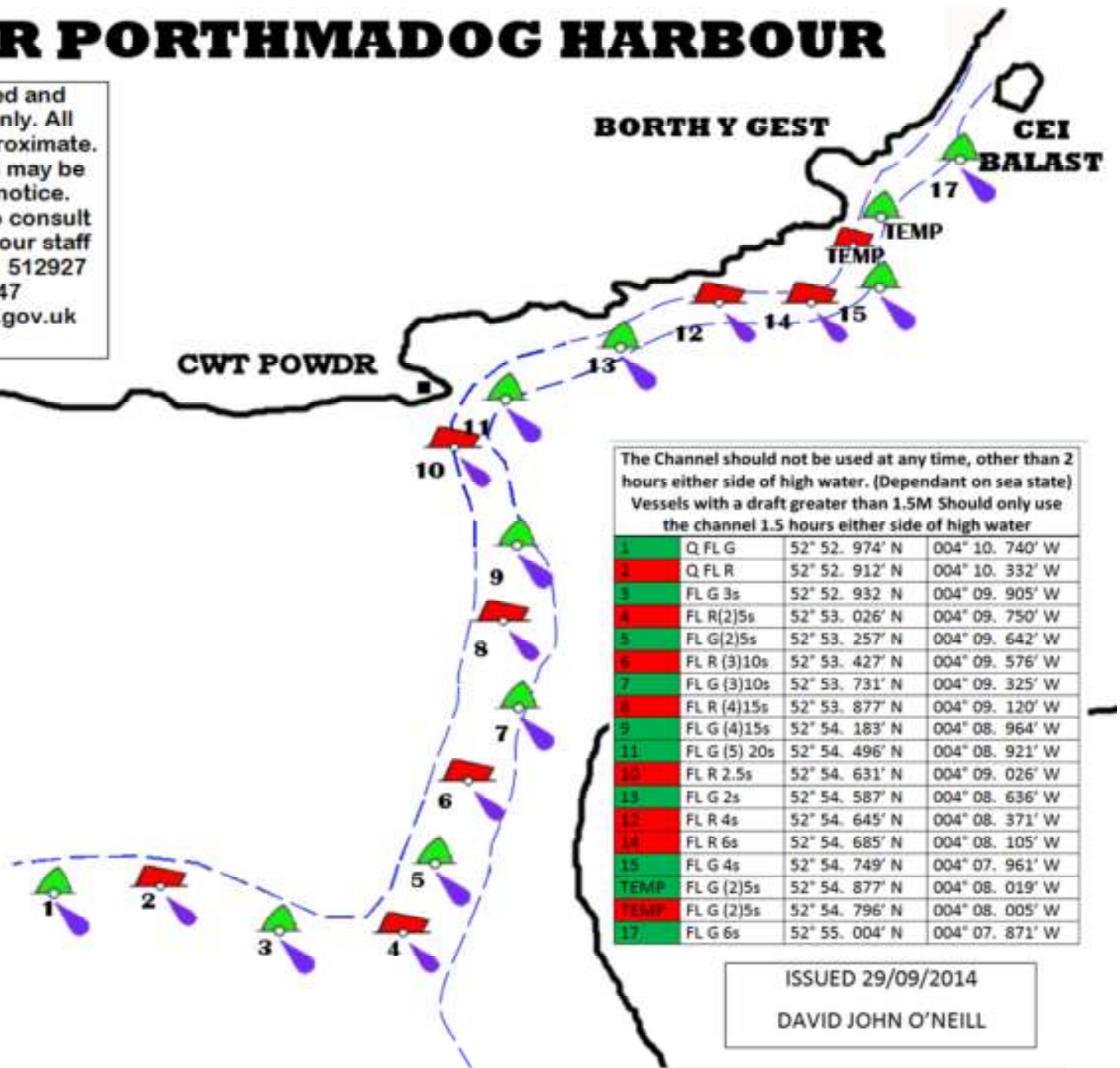
CWT POWDR

BORTH Y GEST

CEI BALAST



**FAIRWAY**  
**LFLW 10s**  
**52°53.008'N**  
**04°11.097'W**



The Channel should not be used at any time, other than 2 hours either side of high water. (Dependant on sea state)  
 Vessels with a draft greater than 1.5M Should only use the channel 1.5 hours either side of high water

1	Q FL G	52° 52. 974' N	004° 10. 740' W
2	Q FL R	52° 52. 912' N	004° 10. 332' W
3	FL G 3s	52° 52. 932' N	004° 09. 905' W
4	FL R(2)5s	52° 53. 026' N	004° 09. 750' W
5	FL G(2)5s	52° 53. 257' N	004° 09. 642' W
6	FL R (3)10s	52° 53. 427' N	004° 09. 576' W
7	FL G (3)10s	52° 53. 731' N	004° 09. 325' W
8	FL R (4)15s	52° 53. 877' N	004° 09. 120' W
9	FL G (4)15s	52° 54. 183' N	004° 08. 964' W
11	FL G (5) 20s	52° 54. 496' N	004° 08. 921' W
10	FL R 2.5s	52° 54. 631' N	004° 09. 026' W
13	FL G 2s	52° 54. 587' N	004° 08. 636' W
12	FL R 4s	52° 54. 645' N	004° 08. 371' W
14	FL R 6s	52° 54. 685' N	004° 08. 105' W
15	FL G 4s	52° 54. 749' N	004° 07. 961' W
TEMP	FL G (2)5s	52° 54. 877' N	004° 08. 019' W
TEMP	FL G (2)5s	52° 54. 796' N	004° 08. 005' W
17	FL G 6s	52° 55. 004' N	004° 07. 871' W

ISSUED 29/09/2014  
 DAVID JOHN O'NEILL